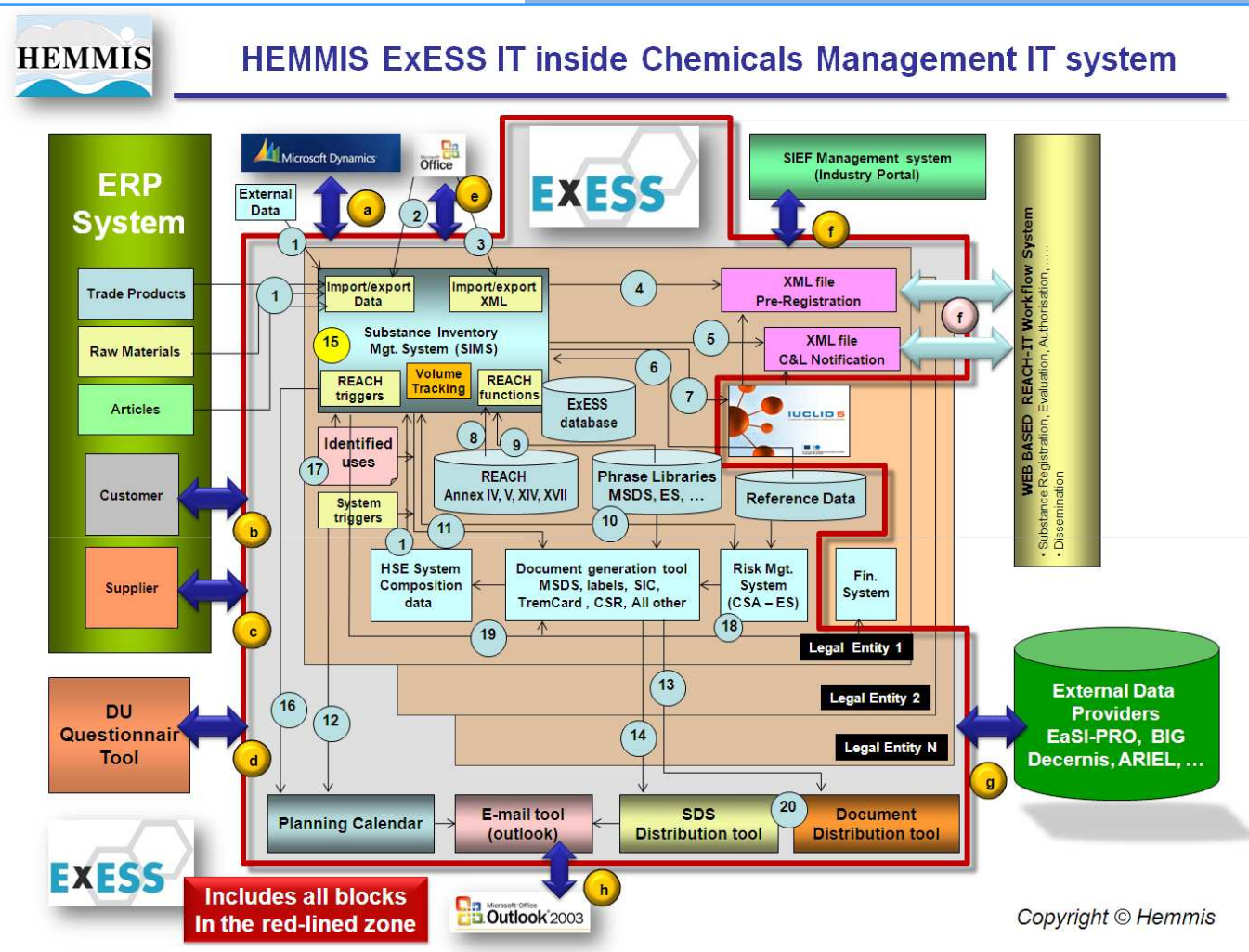




IT concept to support your total Chemicals Management



ExESS offers building blocks to develop the best solution according to your special needs and budget

HEMMIS cooperates with :



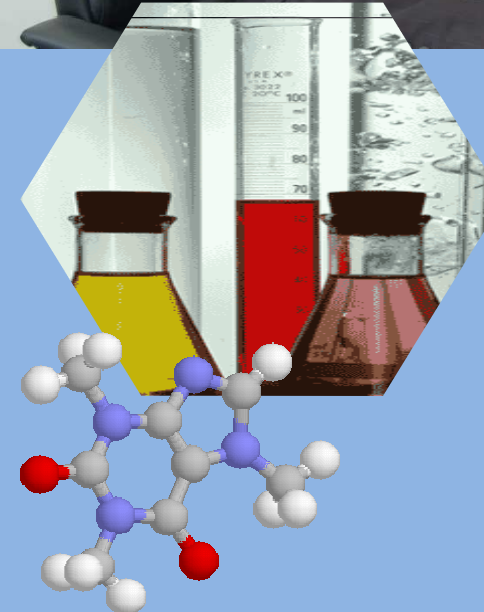
Haskoning Nederland B.V.
a company of ROYAL HASKONING
P.O. Box 151
6500 AD Nijmegen
The Netherlands

ExESS offers a wide range of EH&S related IT functionalities and can be configured to fit your specific organization structure and procedures. Visit : www.hemmis.be



ExESS is a flexible IT toolbox to support all aspects of Chemicals Management. **ExESS** is compatible with many Microsoft applications and can be easily parametrized

Chemicals Management IT tools & Services
MSDS, REACH, GHS, C&L

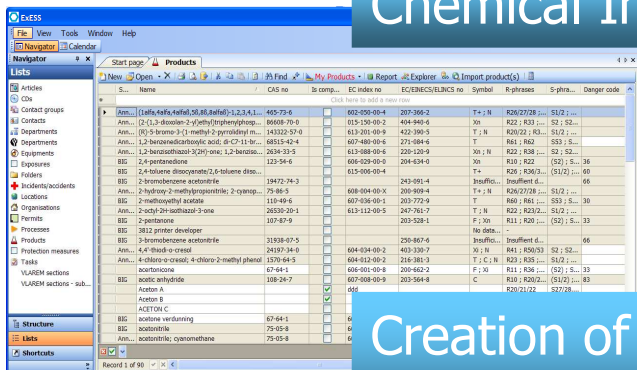


authorization
(pre) registration
inventory of chemicals
classification and labeling
exposure scenarios
(M)SDS management
Safety Cards,
CSA, CSR
and a lot more ...



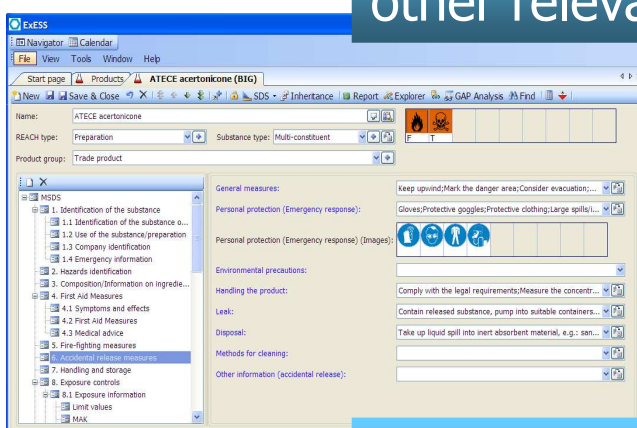
a total IT solution

Chemical Inventory, your basic SIMS



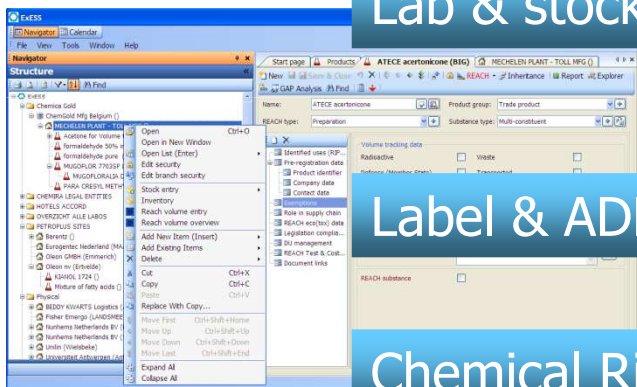
list all information of substances and mixtures using predefined multilingual phrases, manual input, automatic copy of reference databases, or any available digital source.

Creation of (M) SDS, Labels, Safety Cards and other relevant reports



create labels, (M)SDS, Safety Cards and other relevant reports using all available data stored in the database and the build-in report template generator. Use supporting tools for multilingual editing, batch creation of documents, product family inheritance, etc....

Lab & stock management



locate all relevant products on the right place and manage quantities and stock.

Label & ADR Calculation of preparations

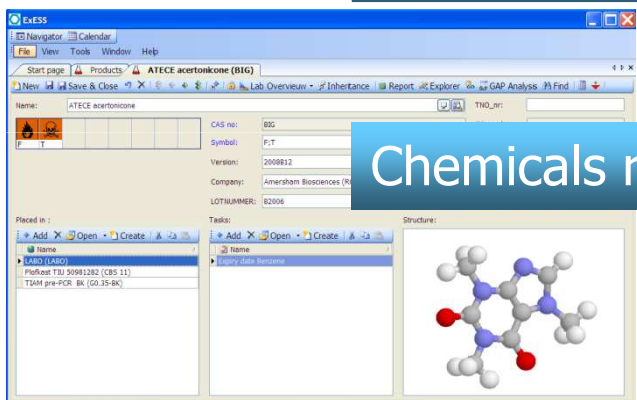
compliant with EU 67/548/EEC and ADR DGL.

Chemical Risk Assessment

implementation of Risk Assessment models and scenario's.

Chemicals related Facility Management

manage all information about Study Reports, tanks, containers, maintenance, inspection, expiry dates, uses, suppliers, clients, permits, and a lot of more facility functions.



The REACH & GHS ready solution :

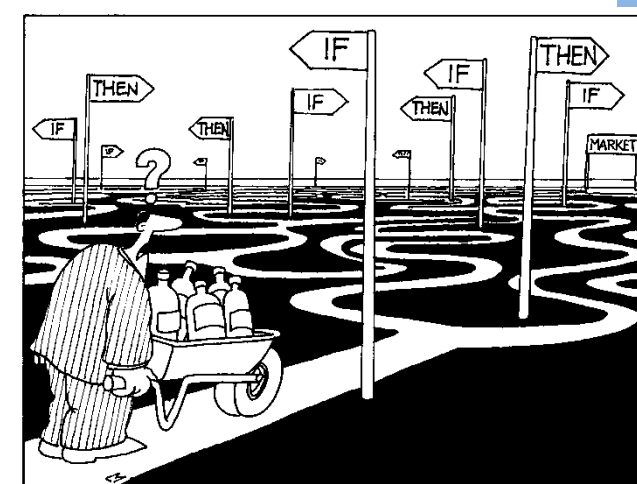
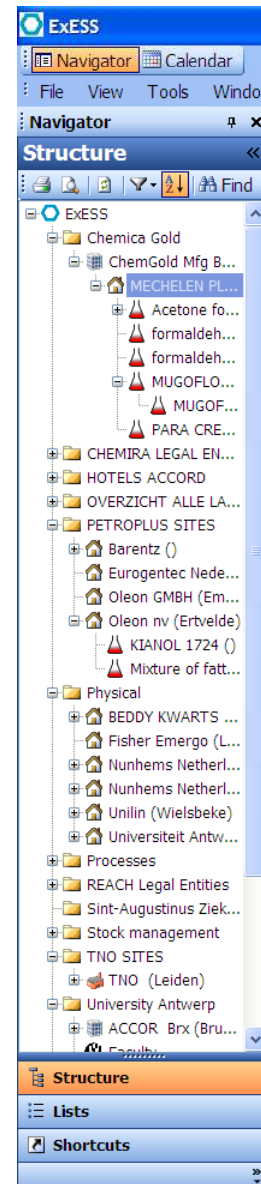
10 commandments to comply with REACH

ExESS is SIMS compatible and supports all the aspects of the Haskoning Chemical Management Tool (CMT) approach

The REACH solution

The ExESS concept implements all REACH related IT requirements related to :

1. Chemical substance data collection & tracking
2. Legal Entity management (LEO)
3. REACH data entries/property settings
4. REACH filters and search criteria
5. REACH Volume tracking
6. REACH Data Gap and Cost Analysis
7. Reporting and data exchange
8. Chemical Risk Assessment Tools (ES/CSA)
9. DU document & data management
10. Business Process Flow, Alarm triggering & Task Management related with (pre)registration, Authorization, SIEF,...



ExESS supports the CMT management approach for REACH designed by

