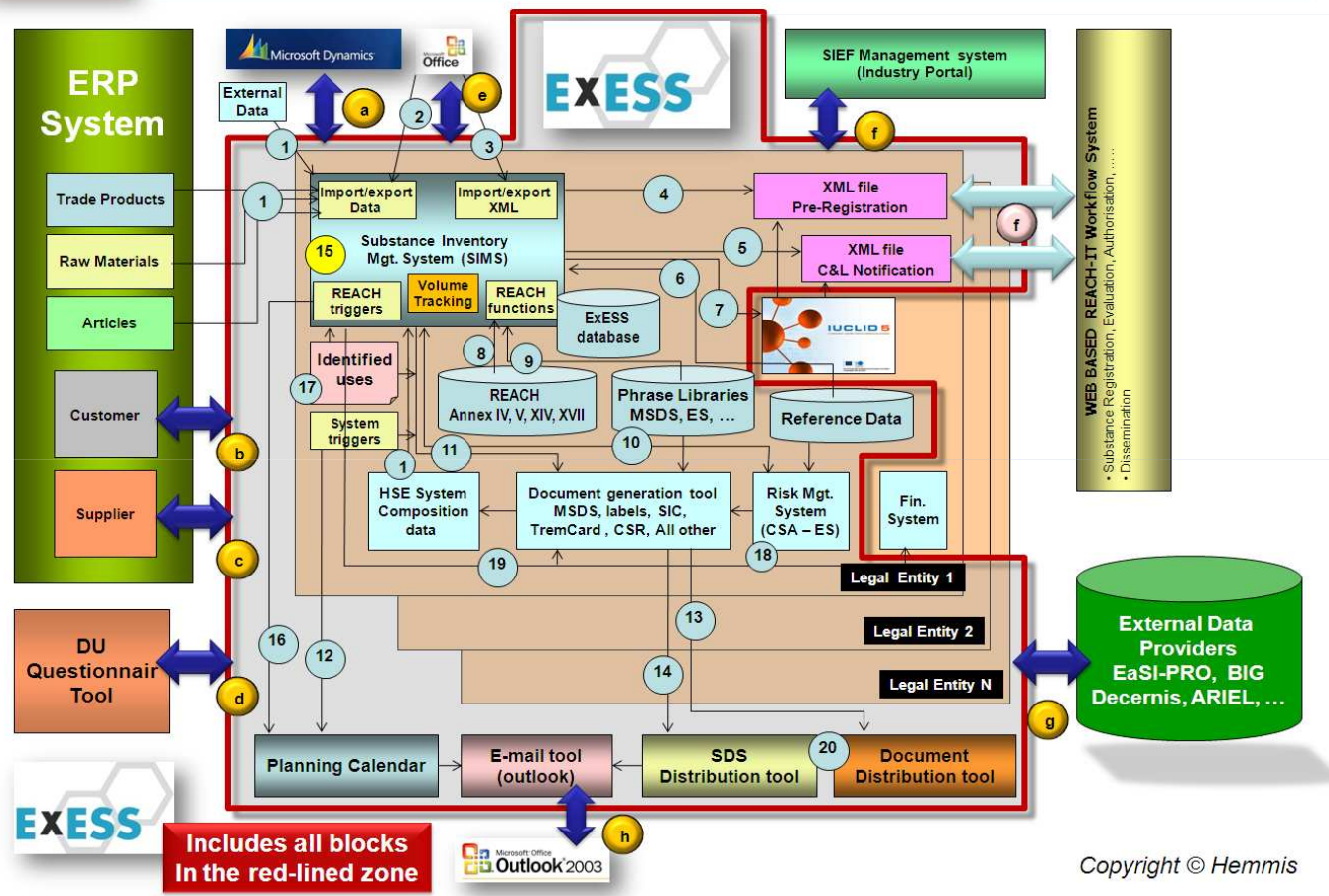




# IT concept to support your total Chemicals Management

HEMMIS

## HEMMIS ExESS IT inside Chemicals Management IT system



**ExESS** offers building blocks to develop the best solution according to your special needs and budget

**HEMMIS**

cooperates with :



**TRASYS S.A. / N.V.**  
Terhulpesteenweg 6 C  
B-1560 Hoeilaart

Web : [www.trasys.be](http://www.trasys.be)

Tel +32 (0) 2 773 88 74 - Fax +32 (0) 2 773 79 00 - [euroreachout@trasys.be](mailto:euroreachout@trasys.be)

**ExESS** offers a wide range of EH&S related IT functionalities and can be configured to fit your specific organization structure and procedures. Visit : [www.hemmis.be](http://www.hemmis.be)

**Euro Reach out**

Expert Management Services for **Reach**



**ExESS** is a flexible IT toolbox to support all aspects of Chemicals Management.

**ExESS** is compatible with many Microsoft applications and can be easily parametrized.

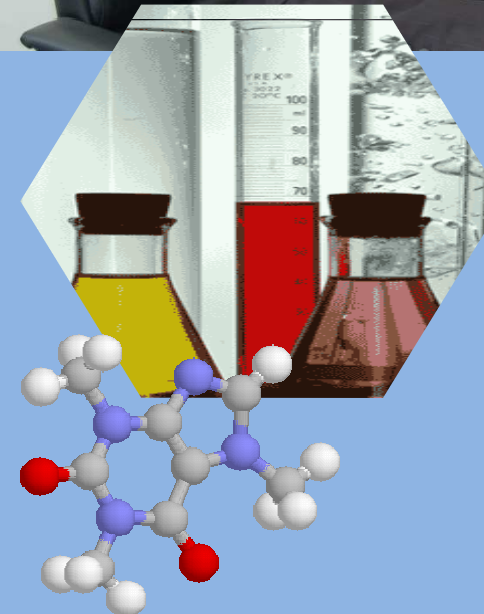
**ExESS** can be integrated or configured with your existing **ERP**

## Chemicals Management IT tools & Services

# MSDS, REACH, GHS, C&L



authorization  
(pre) registration  
chemical inventory  
classification and labeling  
ES exposure scenarios  
(M)SDS management  
Safety Cards,  
CSA, CSR  
ERP link  
and a lot more ...



HEMMIS N.V. - Koning Leopold III laan 2 B-8500 Kortrijk - Tel +32 56 372637 - Fax +32 56 372324 - [info@hemmis.be](mailto:info@hemmis.be) - [www.hemmis.be](http://www.hemmis.be)



## a total IT solution

### Chemical Inventory, your basic SIMS

list all information of substances and mixtures using predefined multilingual phrases, manual input, automatic copy of reference databases, or any available digital source. Compliant with CEFIC's SIMS.

### Creation of (M) SDS, Labels, Safety Cards and other relevant reports

create labels, (M)SDS, Safety Cards and other relevant reports using all available data stored in the database and the build-in report template generator. Use supporting tools for multilingual editing, batch creation of documents, product family inheritance, etc....

### Lab & stock management

locate all relevant products on the right place and manage quantities and stock.

### Label & ADR Calculation of preparations

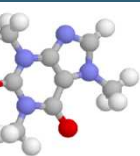
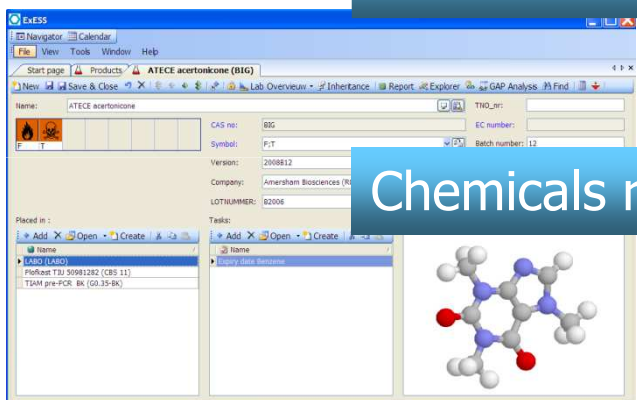
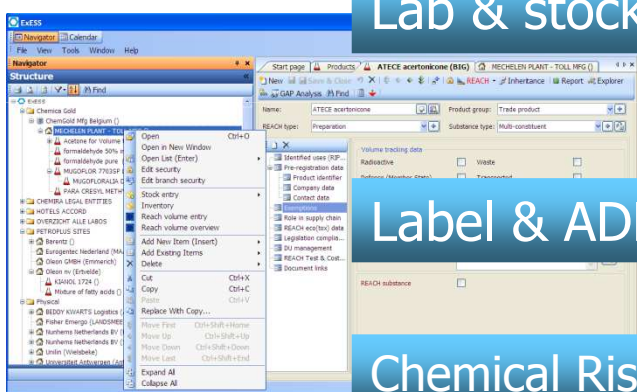
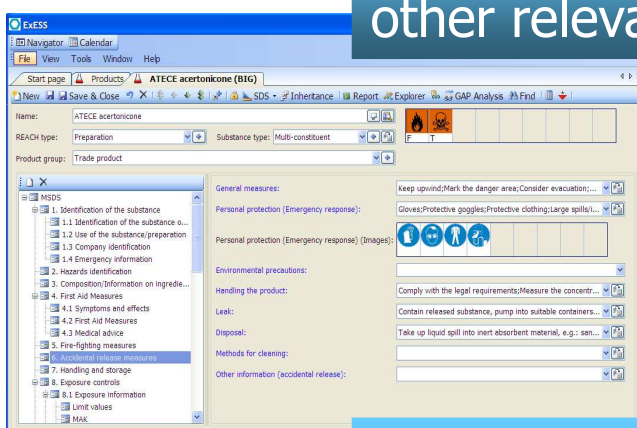
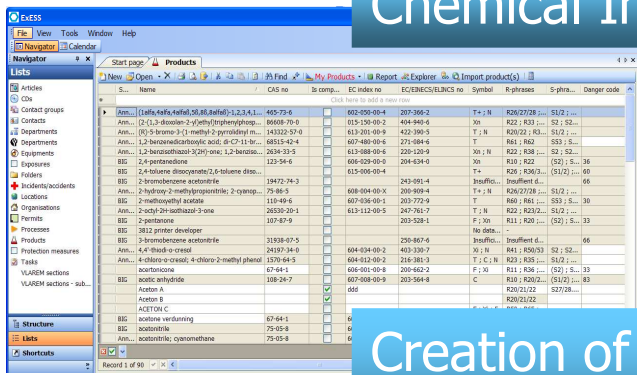
compliant with EU 67/548/EEC and ADR DGL.

### Chemical Risk Assessment - Exposure scenarios

implementation of Risk Assessment models and Risk or Exposure Scenario's.

### Chemicals related Facility Management

manage all information about Study Reports, tanks, containers, maintenance, inspection, expiry dates, uses, suppliers, clients, permits, and a lot of more facility functions.

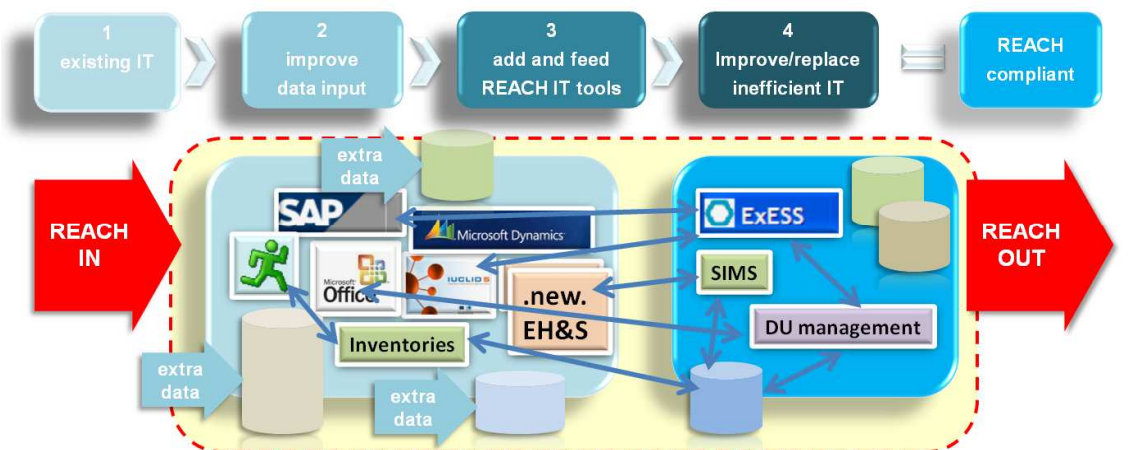


## Euro Reach out Expert Management Services for Reach

## The REACH & GHS ready solution :

### 10 commandments to comply with REACH

ExESS is SIMS compatible and supports all the strategical aspects of the TRASYS Euro REACH out Management Approach



## The REACH solution

The ExESS concept implements all REACH related IT requirements related to :

1. Chemical substance data collection & tracking
2. Legal Entity management (LEO)
3. REACH data entries/property settings
4. REACH filters and search criteria
5. REACH Volume tracking
6. REACH Data Gap and Cost Analysis
7. Reporting and data exchange
8. Chemical Risk Assessment Tools (ES/CSA)
9. DU document & data management
10. Business Process Flow, Alarm triggering & Task Management related with (pre)registration, Authorization, SIEF,...

**ExESS**  
can be integrated  
on top of your  
**ERP**

