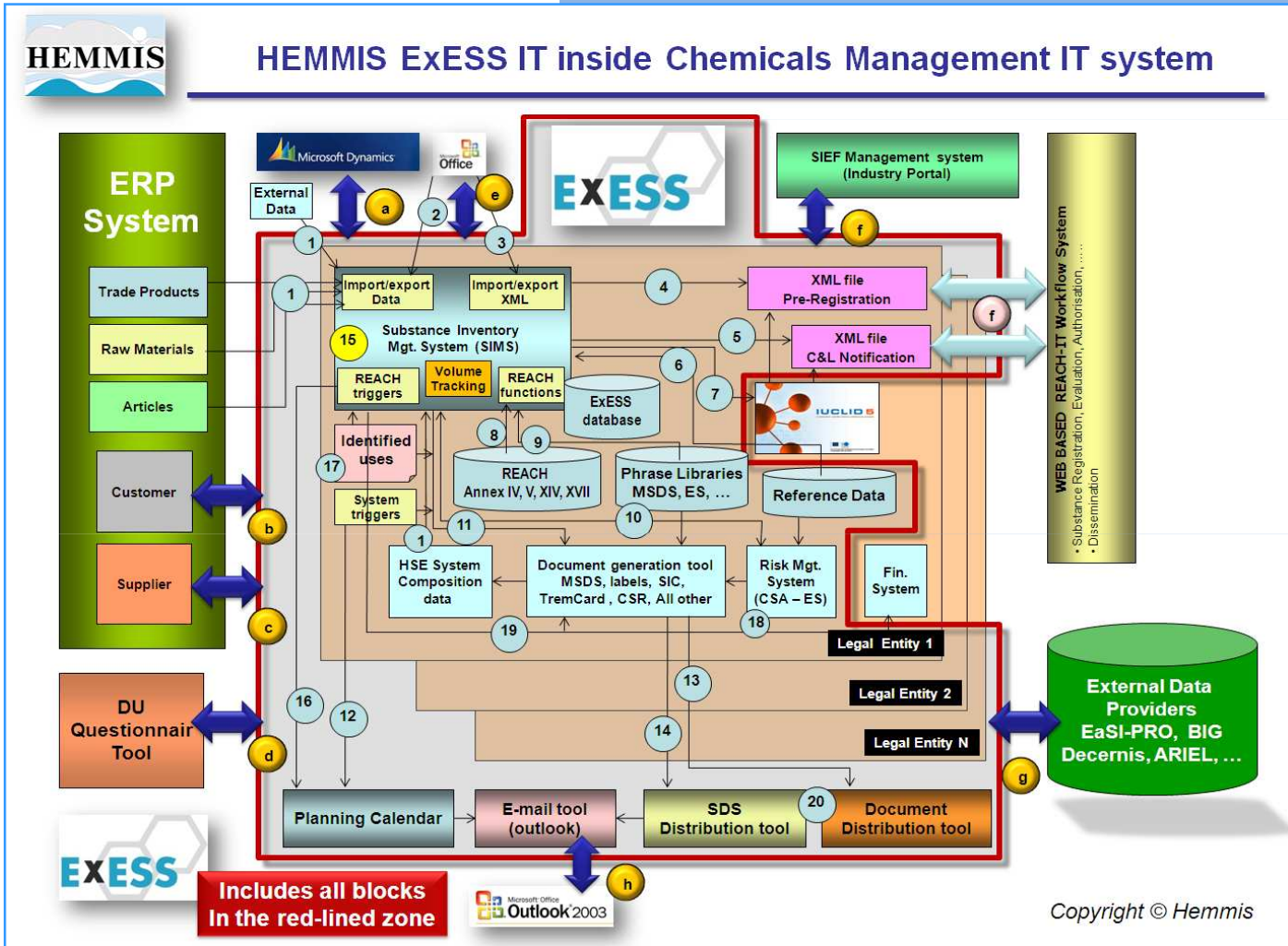




IT concept to support your total Chemicals Management



ExESS is a flexible IT toolbox to support all aspects of **Chemicals Management**.
ExESS is compatible with many Microsoft applications and can be easily parametrized.
ExESS can be integrated or configured with your existing **ERP**

Chemicals Management IT tools & Services SDS, REACH, GHS_CLP



ExESS offers building blocks to develop the best solution according to your special needs and budget

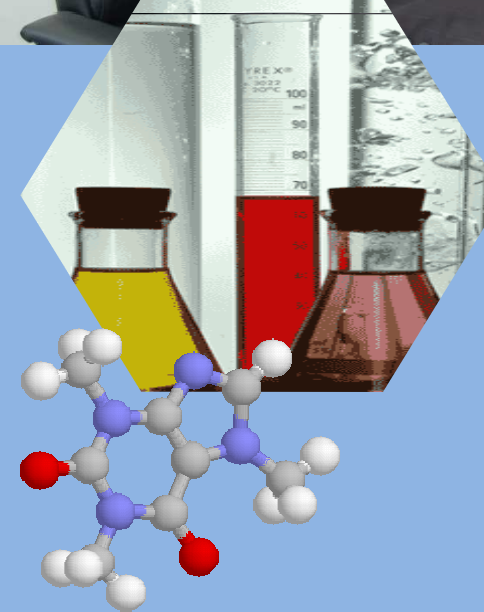
HEMMIS

is partner with :

ExESS offers a wide range of EH&S related IT functionalities and can be configured to fit your specific organization structure and procedures.
 Visit : www.hemmis.be



HEMMIS N.V. - Koning Leopold III laan 2 B-8500 Kortrijk Tel +32 56 372637 - Fax +32 56 372324 - info@hemmis.be - www.hemmis.be



HEMMIS N.V. - Koning Leopold III laan 2 B-8500 Kortrijk - Tel +32 56 372637 - Fax +32 56 372324 - info@hemmis.be - www.hemmis.be

authorization
registration
chemical inventory
classification and labeling
(G)ES exposure scenarios
SDS management
Safety Cards,
CSA, CSR
ERP link
and a lot more ...



EXESS

a total IT solution

Chemical Inventory, your basic SIMS

list all information of substances and mixtures using predefined multilingual phrases, manual input, automatic copy of reference databases, or any available digital source. Compliant with CEFC's SIMS.

Creation of SDS, eSDS, Labels, Safety Cards, ES, CSR, and other relevant reports

create labels, SDS, eSDS, Safety Cards and other relevant reports (CSR, ES) using all available data stored in the database and the build-in report template generator. Use supporting tools for multilingual editing, batch creation of documents, product family inheritance, etc....

Lab & stock management

locate all relevant products on the right place and manage quantities and stock.

EU/GHS_CLP Labeling & ADR

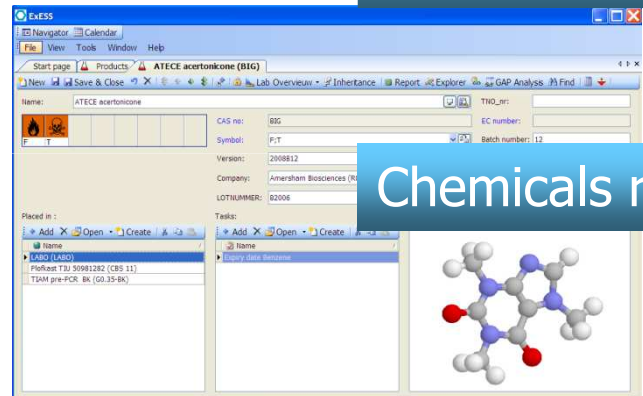
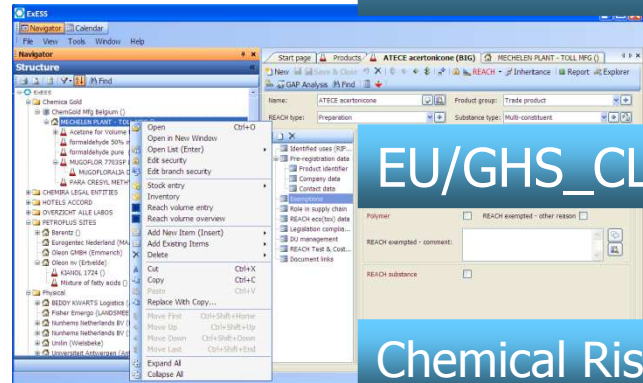
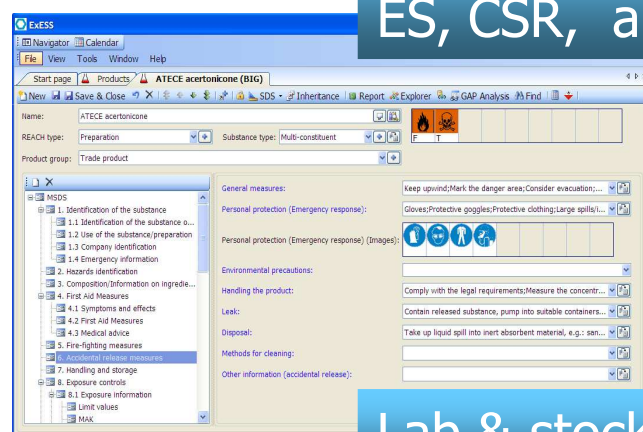
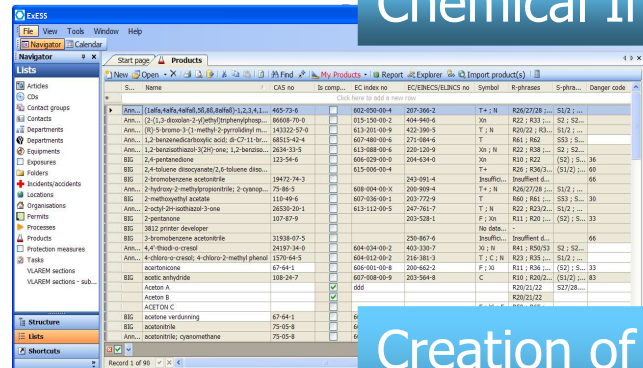
Calculations compliant with EU 67/548/EEC and 1999/45/EG, ADR DGL and GHS_CLP basics.

Chemical Risk Assessment & XML data exchange

Implementation of Risk Assessment models, XML data exchange with CSA/CSR IT tools, and Risk or Exposure Scenario's.

Chemicals related Facility Management

manage all information about Study Reports, tanks, containers, maintenance, inspection, expiry dates, uses, suppliers, clients, permits, and a lot of more facility functions.



EXESS



Euro Reach out
Expert Management Services for Reach

The REACH & GHS ready solution :

Strategic approaches for REACH

ExESS is SIMS compatible and supports all the strategic aspects of :

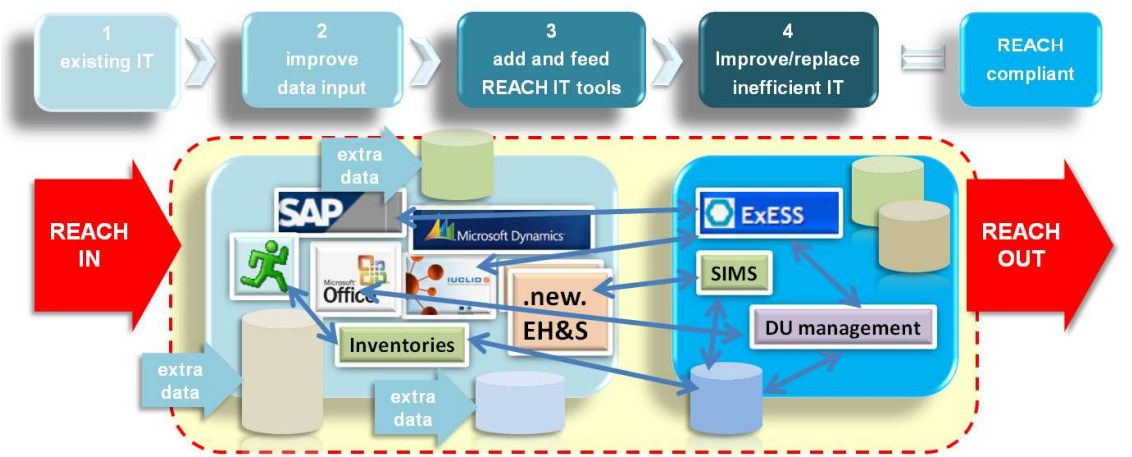
* the **TRASYS** Euro REACH out Management Approach

Phone +32 (0) 2 773 88 74 - Fax +32 (0) 2 773 79 00 - euroreachout@trasys.be

* the **ROYAL HASKONING** CMT REACH concept

Phone +31 (0)24 3284392 - www.be-reachable.com and click CMT

10 commandments to comply with REACH



The REACH solution

The ExESS concept implements all REACH related IT requirements related to :

1. Chemical substance data collection & tracking
2. Legal Entity management (LEO)
3. REACH data entries/property settings
4. REACH filters and search criteria
5. REACH Volume tracking
6. REACH Data Gap and Cost Analysis
7. Reporting and data exchange
8. Chemical Risk Assessment Tools (ES/CSA)
9. DU document & data management
10. REACH Compliancy Monitoring : Business Process Flow, Alarm triggering & Task Management related with (pre)registration, Authorization, SIEF,...

ExESS can be integrated on top of your ERP

