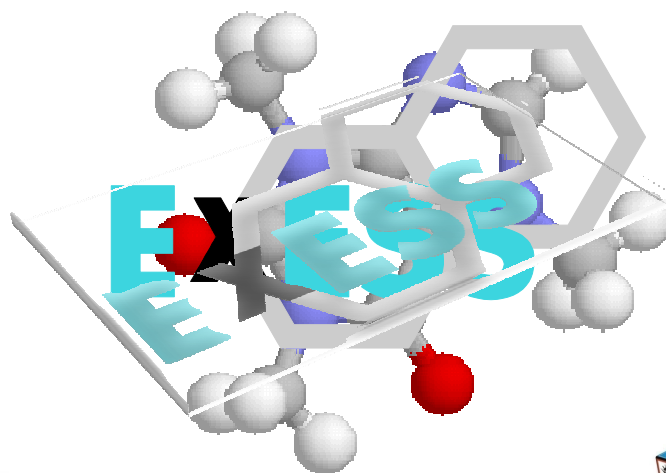


ExESS IT toolbox REACH functions



6 december 2010

Most successful REACH functions in ExESS : more with less



1

Most successful REACH functions in ExESS : more with less



6 december 2010

Most successful REACH functions in ExESS : more with less



2

Content Overview (1)

- Authoring REACH an GHS compliant SDS, ES and e-SDS
- SIMS applications : Collection of relations and data for :
 - Articles
 - Mixtures and preparations
 - Substances
- Collection and reporting of REACH relevant data :
 - Roles, exemptions, functions, tonnage bands, registration deadlines, ...
 - Grouping of data per LE, BU, Site, company dependent structures
- Automated SVHC detection (also non-REACH related)
 - Calculation of %ww in articles
 - Presence in Mixtures and preparations
- Trade volume collection (import, export, bought in EU,...)



6 december 2010

Most succesful REACH functions in ExESS : more with less



3

Content Overview (2)

- REACH VOLUME TRACKING
 - Automated calculation of tonnage bands per substance per LE
 - Automated alarm functions when Volumes meet threshold values
 - Export to excel for Graphical presentation
 - Simulations on estimated volume information
 - Parameterization possibilities for reporting (Pivot tables)



6 december 2010

Most succesful REACH functions in ExESS : more with less



4

Content Overview (3)

- **Substance end point data & document management :**
 - collection of different values per substance property related to studies, tests, literature evaluation
 - management of links to documents and URL with substance information
 - XML exchange of DATA SETS for intercompany communication or exchange with SIEF and consortia
- **Product and Substance USE management**
 - Relation Product/substance/Use titles
 - Supplier use, Customer use, Internal use, Site use
- **REACH Supply Chain Communication (ExESS + Publicchem)**
 - USE title management
 - SVHC declarations
 - Data sets
 - automated distribution of SDS , ES and e-SDS



6 december 2010

Most succesful REACH functions in ExESS : more with less



5

Content Overview (4)

- **End point data Gap and Cost analysis :**
 - comparison of data properties with registration/tests requirements in REACH Annex VII – X (related to tonnage band)
 - Estimation of costs to analyze/test data gaps
- **Interfacing ExESS with IUCLID 5**
- **LE entity Management (changes in LE relations)**
- **RAECH compliancy PERFORMANCE INDICATORS**
 - Based on logic between inputted data , presentation of REACH related Performance indicators :
 - Registration status
 - Reliability of suppliers
 - Presence of validated ES, e-SDS
 - SIEF related task management
 -
- **Calendar based TASK management**
 - Linked with email system



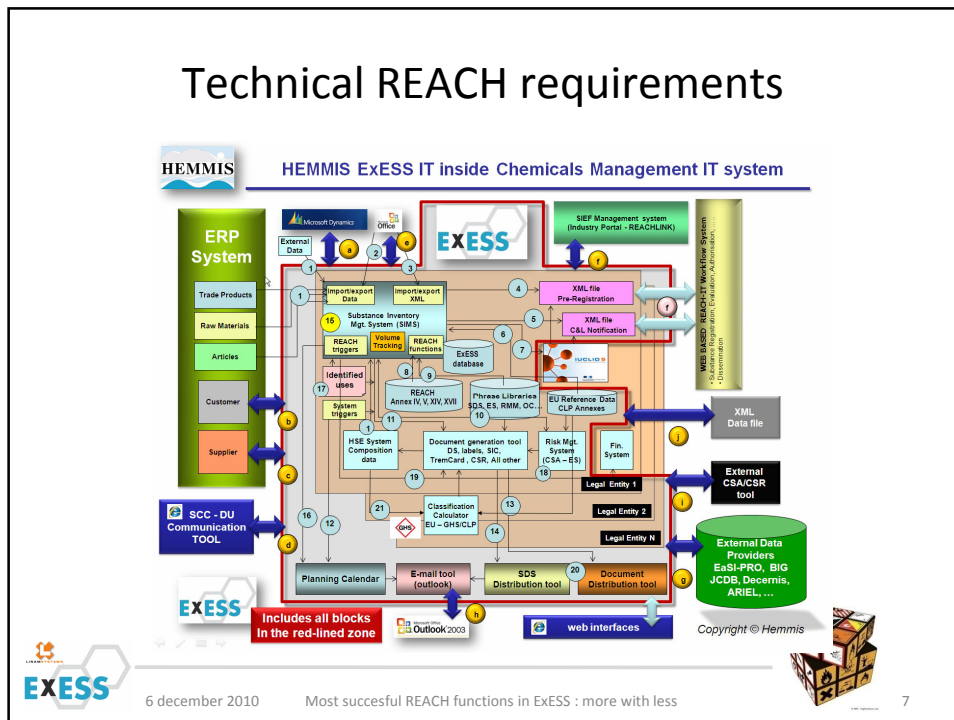
6 december 2010

Most succesful REACH functions in ExESS : more with less



6

Technical REACH requirements



Technical REACH requirements

Interfaces with ERP or other IT systems for :

- Trade product and Substance data exchange
- Synchronization of Suppliers, clients, sites, LE, ...
- Composition of Mixtures and Preparations
 - Product composition
 - BOM for articles
- Transfer of Trade Volumes : imported, bought in , exempted, ...
- Link with websites for document distribution
 - SDS, ES, e-SDS
 - SVHC confirmation letters
- Link with REACH SCC tools for REACH communication
- Link with Mail systems (SMTP)
- XML file production for data exchange with REACH IT
 - C&L Notification



ExESS, more with less



TRASYS
WE GET IT DONE

ExESS is SIMS compatible and supports
all the strategic aspects of :
the TRASYS Euro REACH out Management Approach

Phone +32 (0) 2 773 88 74 - Fax +32 (0) 2 773 79 00 - euroreachout@trasys.be

- Compiled by Frans Lemaire, December 2009, HEMMIS : flm@hemmis.be

Although the information in this presentation are presented in good faith and are believed to be correct at the time of compilation, HEMMIS and LISAM are never responsible for the completeness or accuracy of the information in this presentation



6 december 2010

Most succesful REACH functions in ExESS : more with less



9