

# ExESS

## C&L Notification Support

from Version 10.3.0



25 August 2010

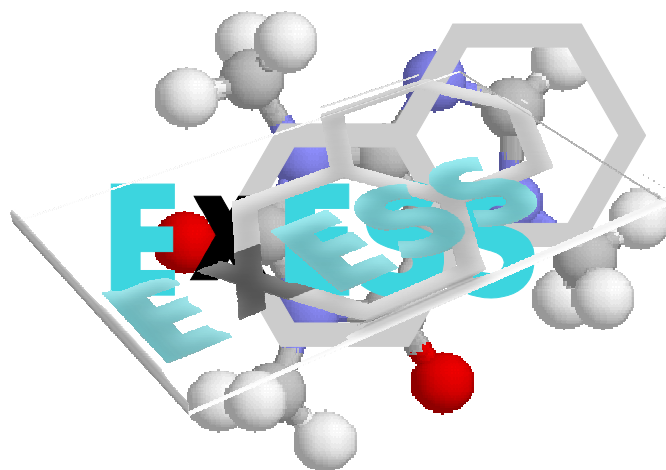
C&L Notification support in ExESS



1

# ExESS IT toolbox

## ExESS and C&L Notification



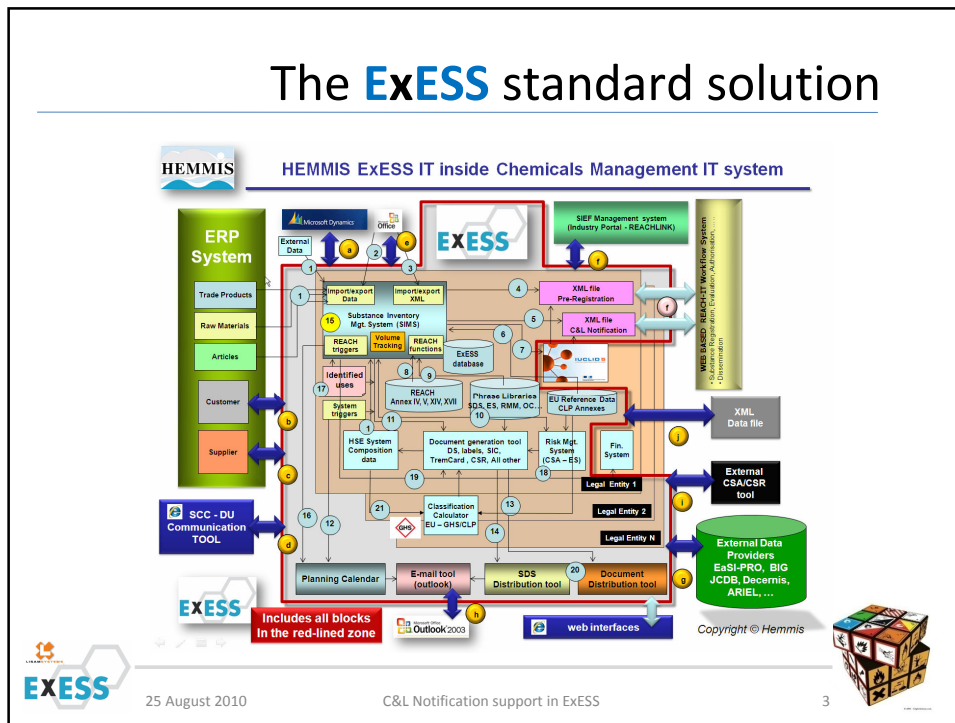
25 August 2010

C&L Notification support in ExESS



2

# The ExESS standard solution



25 August 2010

C&L Notification support in ExESS

3



## Required ExESS C&L components

The screenshot shows the ExESS software interface for GHS classification parameters. The main window displays a table of classification codes and their corresponding H-Statements. A secondary window shows the GHS classification parameters for a specific substance.

| Classification code | H-Statement |
|---------------------|-------------|
| H225                | H310        |
| H336                | H336        |
| H225                | H336        |
| H225                | H336        |

CLP not classified:  H225;H336;H336

CLP Hazard statements: H225;H336;H336

CLP Pictograms: GHS02;GHS07

- ExESS Modules**
- ExESS Inventory
  - ExESS Chemicals Management
  - ExESS CLP calculation
- Main Requirements**
- CLP data available in ExESS
  - Download the ECHA Excel Tool for C&L Notification
  - ExESS creates all CLP data and transfers relevant data into the ECHA Excel file



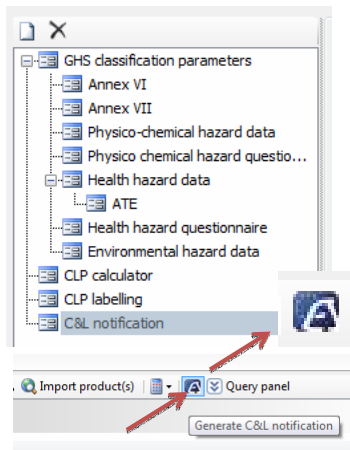
25 August 2010

C&L Notification support in ExESS

4



# The ExESS C&L overall steps



## ExESS C&L approach

- Step 1 :**  
Use ExESS as calculator or collector for the Substance CLP data
- Step 2 :**  
Select/define the substances to notify
- Step 3 :**  
Add all data (about 200 fields) in ExESS
- Step 4 :**  
Generate the data transfer into the ECHA Excel C&L File



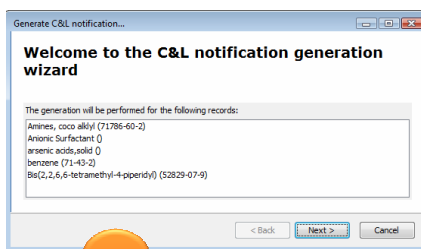
25 August 2010

C&L Notification support in ExESS

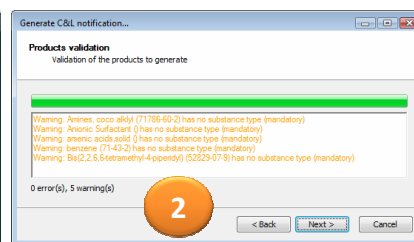
5



# The ExESS C&L approach

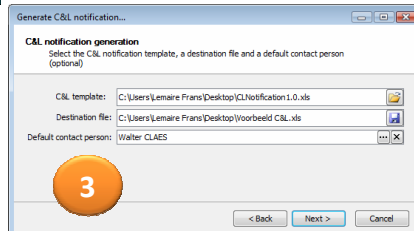


1



2

- Step 1 :** Selection
- Step 2 :** Validation
- Step 3 :** Source file, Destination file, ...



3



25 August 2010

C&L Notification support in ExESS

6



# The ExESS C&L detail steps

**Step 1 : Selection**  
**Step 2 : Validation**  
**Step 3 : Source file, Destination file, ...**



25 August 2010

C&L Notification support in ExESS

7



# The ExESS C&L resulting Excel file

| Internal Id | Classification selection    | Substance type | Reference number | Reason for update | EC Number | CAS Number |
|-------------|-----------------------------|----------------|------------------|-------------------|-----------|------------|
| 4           | 1-dodecanol                 | F              |                  |                   | 203-982-0 | 112-53-8   |
| 5           | AcetoneClpClassification    |                |                  |                   | 200-652-2 | 67-64-1    |
| 6           | formaldehydeClpClassificati |                |                  |                   | 200-001-8 | 50-00-0    |
| 7           | FormaldehydeClpClassifica   |                |                  |                   | 200-001-8 | 50-00-0    |
| 8           | FormaldehydeClpClassifica   |                |                  |                   | 200-001-8 | 50-00-0    |
| 9           | FormaldehydeClpClassifica   |                |                  |                   | 200-001-8 | 50-00-0    |
| 10          | formaldehyde 50% in         |                |                  |                   | 200-001-8 | 50-00-0    |



25 August 2010

C&L Notification support in ExESS

8



## ExESS, more with less



**LISAM and TRASYS**  
are partners  
for **ExESS** & SAP (ERP)  
implementations



**ExESS** is **SIMS** compatible and supports  
all the strategic aspects of :  
the **TRASYS Euro REACH out** Management Approach

Phone +32 (0) 2 773 88 74 - Fax +32 (0) 2 773 79 00 - [euoreachout@trasys.be](mailto:euoreachout@trasys.be)

- Compiled by Frans Lemaire, August 1010, Lisam : [fransL@lisam.com](mailto:fransL@lisam.com)

Although the information in this presentation are presented in good faith and are believed to be correct at the time of compilation, LISAM is never responsible for the completeness or accuracy of the information in this presentation



25 August 2010

C&L Notification support in ExESS

